

## Evolving Code 2

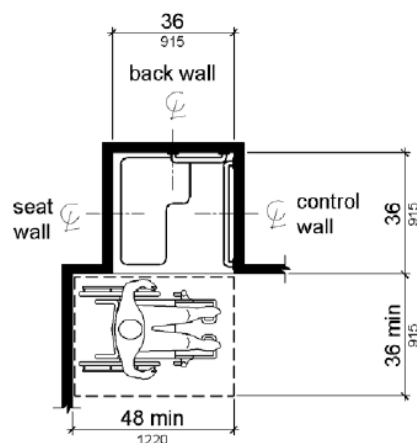
### **Subject: Transfer Type Shower**

2016 CBC Sections: Table 11B-224.2, §11B-608.2.1, 11B-608.3.1, 11B-608.4, 11B-608.5.1, 11B-608.7, and 11B-610.3

Explanation: Although it is often preferred by users of mobility devices, transfer type shower is currently not allowed in California. Transfer type shower stalls allow for mobility devices to be placed outside of the wet area during the shower and provide easier access to grab bars and controls. DSA is proposing to reinstate the allowance of and requirements for transfer type showers. A transfer type shower is smaller in size at 36" by 36". Note that it is not a minimum dimension rather a fixed dimension. At existing facilities, there will be an exception under §11B-608.7 permitting a threshold 2" maximum in height where provision of a 1/2"-high threshold would disturb the structural reinforcement of the floor slab.

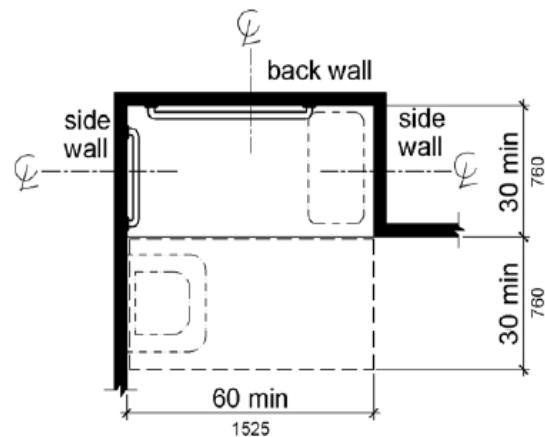
Proposed Language: Contact Marx|Okubo for the proposed requirements.

**M|O Opinion: This is a helpful change for both mobility device users as well as building/facility owners. Smaller footprint as well as the curb height allowance will make barrier removal of existing facilities much easier, which will provide enhanced access.**



Note: inside finished dimensions measured at the center points of opposing sides

**Transfer Type Shower**



Note: inside finished dimensions measured at the center points of opposing sides

**Standard Roll-In Type Shower**